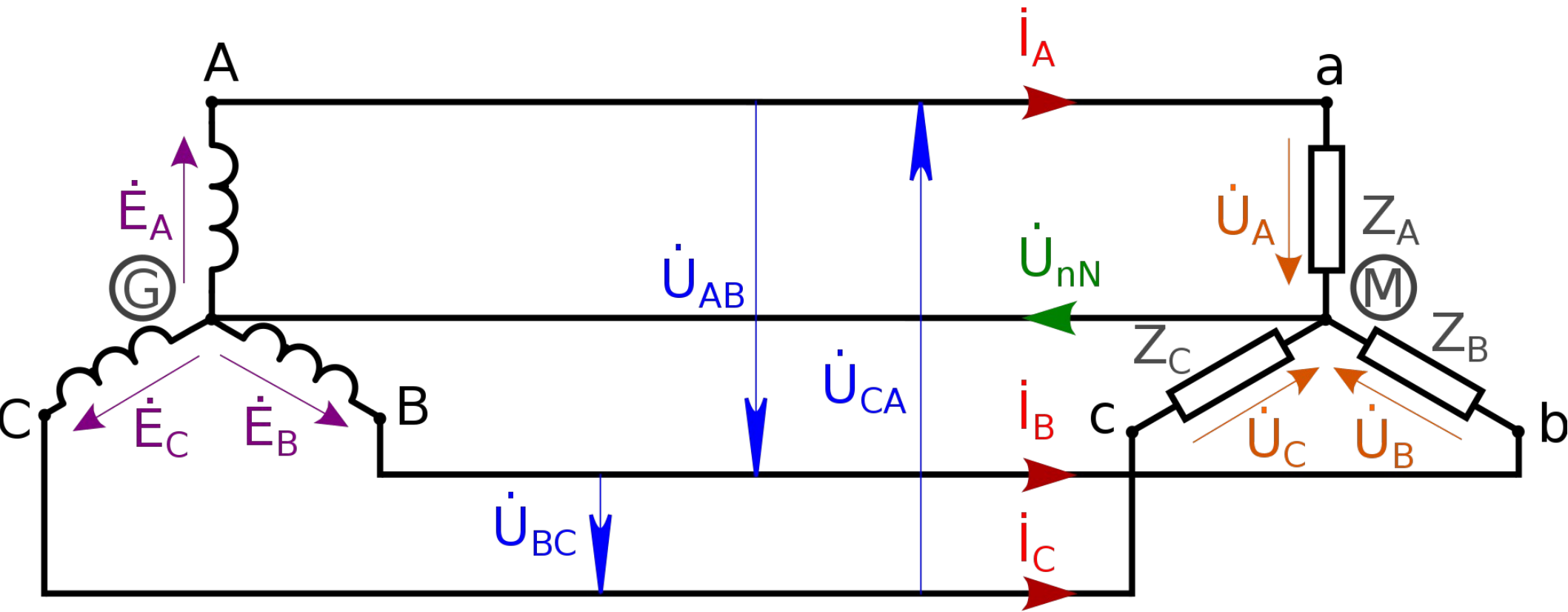


3 fase systeem

Welk systeem hebben jullie: 3 fase of 1 fase systeem

Uitleg sterschakeling

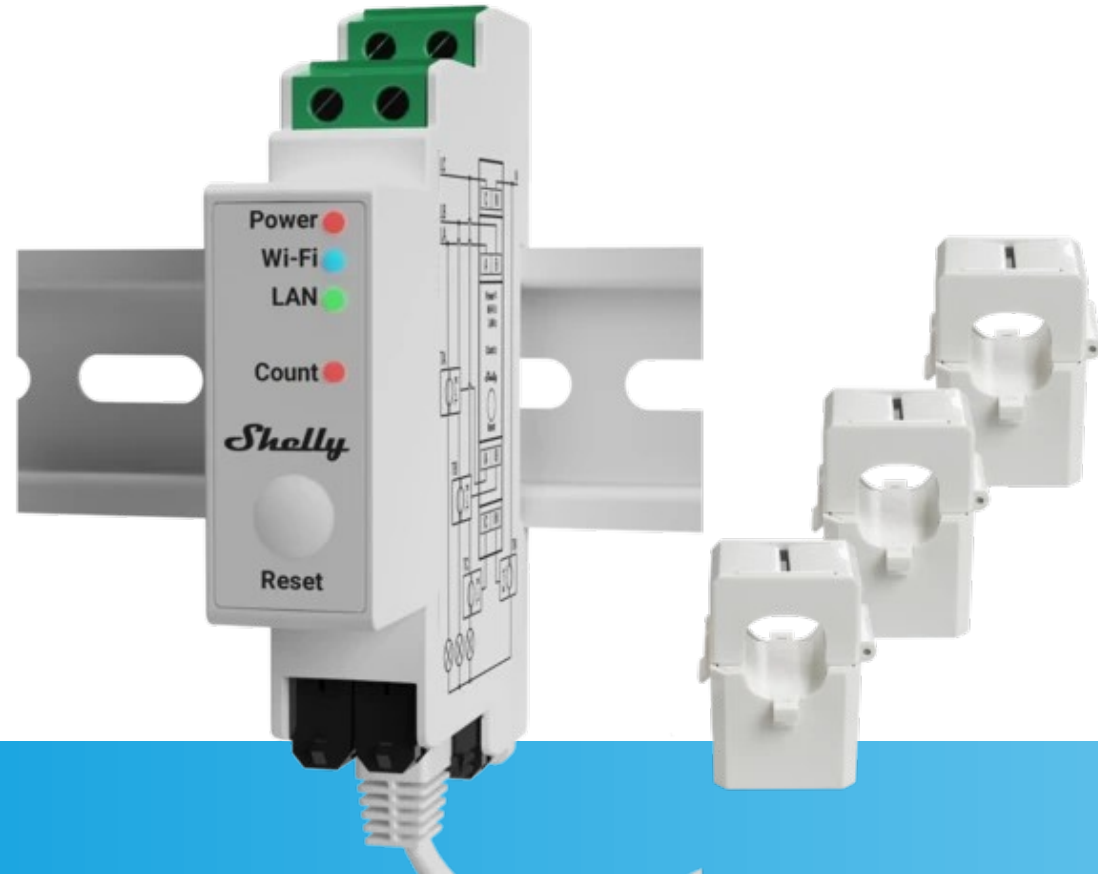


- 1 fase en 3 fase kilowattuurmeters
-



-
-





2	ZWave	Yes	OpenZWave USB Version: 1.6-1911-gc6a420ef Setup	/dev/ttyACM0
---	-------	-----	---	--------------

Showing 1 to 15 of 15 entries First Previous 1

[Update](#) [Delete](#)

Enabled:

Name:

Type:

Log Level: Info Status Error

Data Timeout:
 Specifying a Data Timeout will restart the hardware device if no data is received for the specified time.
Do not enable this option for devices that do not receive data!

Serial Port:

Baudrate:

CRC message validation:
 Using CRC message validation prevents incorrect data from entering the Domoticz database.
Should normally not be disabled!

Rate Limit: (Seconds) 0 = Disabled
 This limits the amount of meter updates.

Decryption Key:
 (Use only when your provider encrypts the payload)

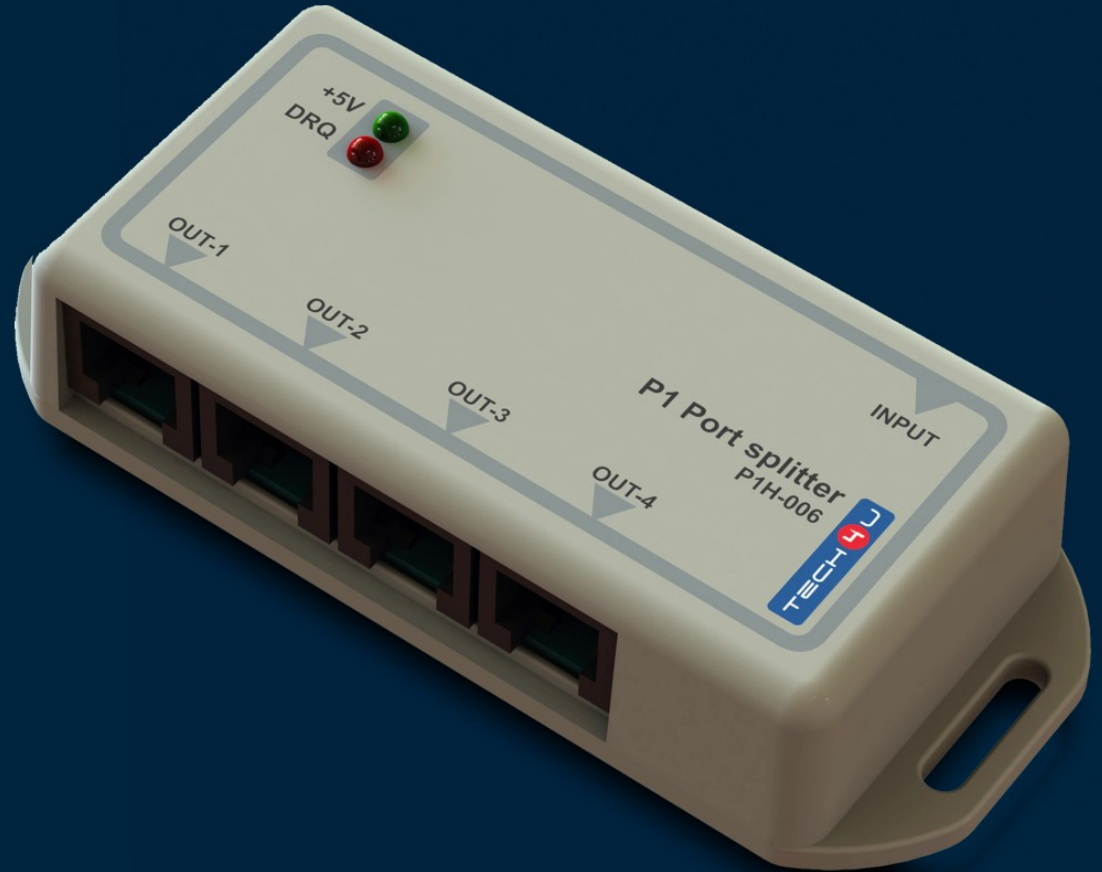
[Add](#)



L+G ZCF110CctFs2



P1 port splitter 4x (P1H-006)



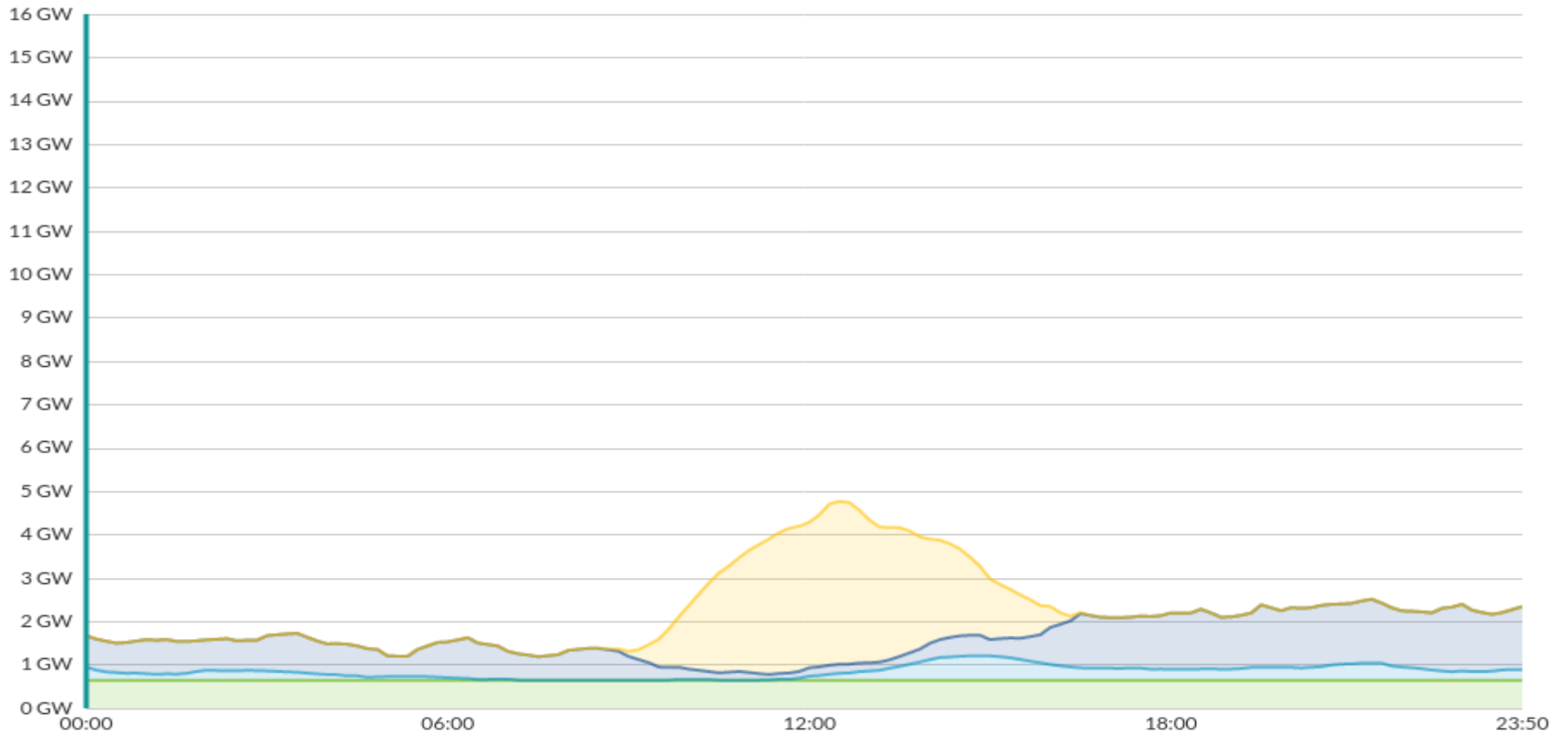
Boilermind 5.0

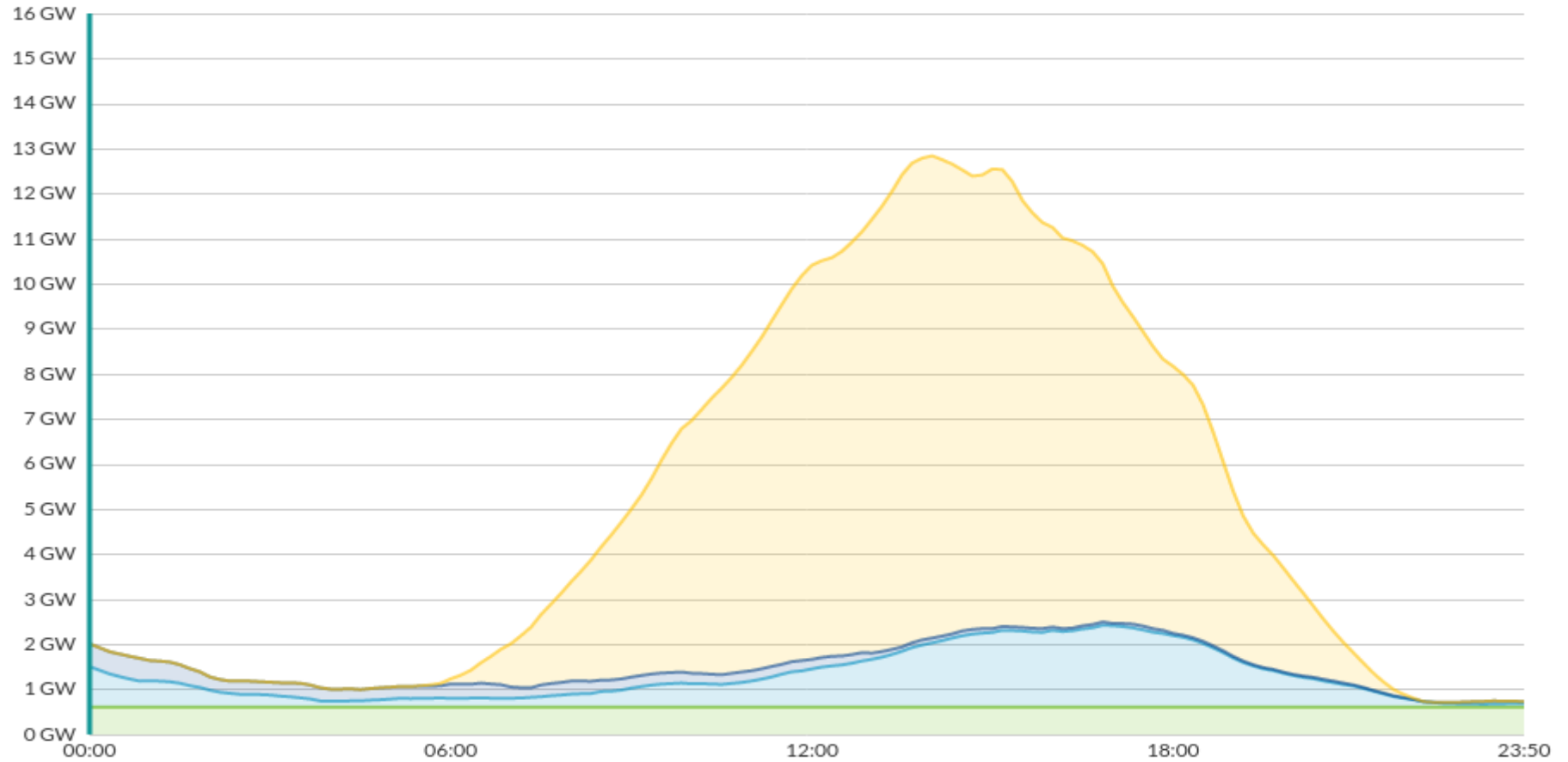
tariff based relay








- Wat willen we meten en weten
- Willen de gegevens via een portaal laten lopen
- De elektrische grootheden kunnen we makkelijker weergeven
- Opslag zal nu vooral via batterijen en warmteopslag gaan. Er nu gaat het ingewikkeld worden.
- Kwhmeters bidirectioneel
- V2g en v2l
- Weergave van de relevante gegevens






AC•THOR

AC•THOR 1 - M1  

58.0 °C 



1000 W 2000 W 3000 W

Heizleistung 40 W

Gerätestatus

- Aus
- Ein

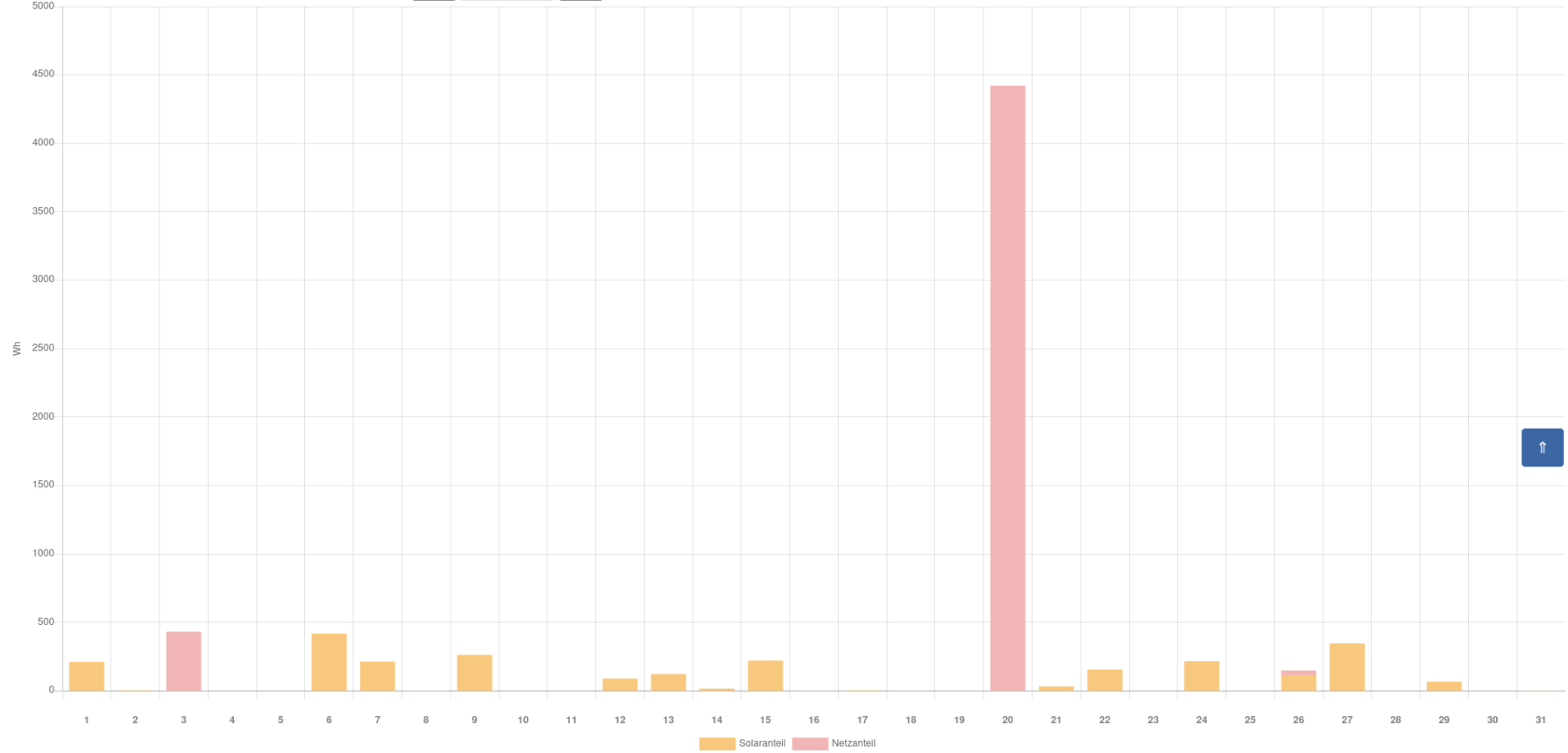


AC-THOR Charts

Chart: Leistung

Zeitraum: Tag Monat Jahr

Datum:



AC-THOR Charts

Chart:

Zeitraum:

Datum:

Leistung ▼

